

# POTTON PRIMARY SCHOOL

## Newsletter 24<sup>th</sup> April 2026



### From the Headteacher

Dear Parents/Carers,

This week we welcomed our School Improvement Advisor into school. During our walk around the school, we managed to visit almost every class. It was good to see the progress being made in writing as we continue to implement our new writing scheme Essentials Writing throughout the school.

Our staff meeting this week focused on Maths and practical games and activities we could be using in the classroom. I look forward to seeing the activities being used by the children to practice and consolidate key number and fluency skill.

Next week we have our Year 3 & 4 production. The children have been working really hard rehearsing and the singing is wonderful - if you are coming to watch you're in for a treat!

Please remember that on Wednesday 29<sup>th</sup> April after school we have our next 'School Council Cake Sale' where Year 4 are invited to bring in baked or faked (shop brought) items that can be sold on the stall. Please remember to check labels and ensure there are no nuts in the products.

I would also like to say a huge thank you to parents/carers that have brought food donations in for our Breakfast Club. These donations are very gratefully received and help us to continue to provide this.

Wishing you all a lovely weekend.

Kindest regards  
Miss J Watts  
Headteacher

### Diary Dates



**Tuesday 28<sup>th</sup> April - 9:30am** - Year 3 & 4 Play Performance to parents

**Wednesday 29<sup>th</sup> April - 3:20pm** School Council Cake Sale - Year 4 to bring in cake donations.

**Thursday 30<sup>th</sup> April - 2:00pm** - Year 3 & 4 Play Performance to parents.

**Friday 1<sup>st</sup> May** - Year 2 Trip Ferry Meadows

**Week Commencing 11<sup>th</sup> May** - Year 6 SATS

**Wednesday 13<sup>th</sup> May** - Year 2 Learn Together Afternoon - More Info to follow

**Wednesday 13<sup>th</sup> May** - School Council Cake Sale - Year 1 to bring in donations

**Monday 18<sup>th</sup> May** - EYFS Ark Farm in school

**Wednesday 20<sup>th</sup> May** - Sports Day

**Wednesday 24<sup>th</sup> June** - EYFS Sports Day

### Save The Date PTFA Summer Fayre

**Saturday 11<sup>th</sup> July**  
**12:00 - 4:00pm**

This year the PTFA will be hosting the Potton Primary PTFA Summer Fayre. This event is being held to help raise funds to install a Learning Pod for our EYFS classes.

The PTFA are in need of volunteers on the day if you are able volunteer to help for some or all of the event either setting/packing up, running a stall etc. your help would be much appreciated. If you can help please contact the PTFA on [ptfa@pottonprimary.co.uk](mailto:ptfa@pottonprimary.co.uk)

### Letters Home

**EYFS**  
Sports Day

**Year 1** -  
Hertfordshire Zoo Trip

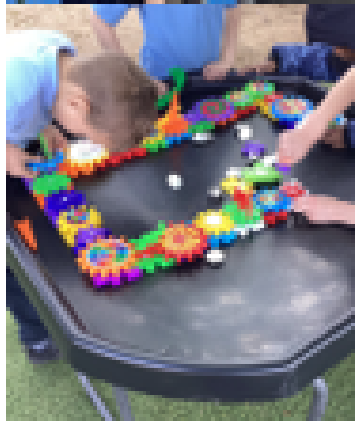
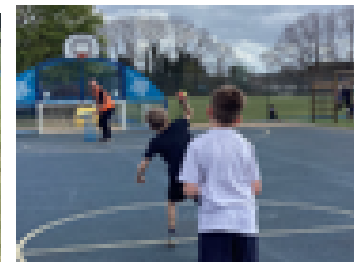
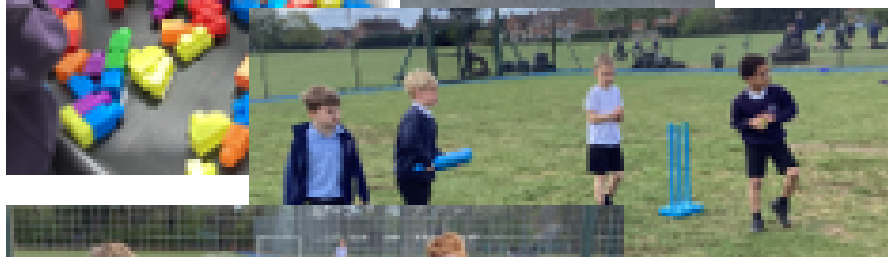
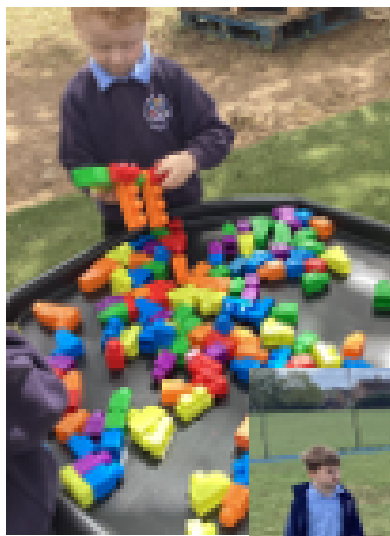
**Year 6** -  
Leavers Hoodies



# OPAL Newsletter



The children have really enjoyed playing outside especially with the weather getting better!



# Attendance Data

You MUST inform us if your child is not going to attend school.

If we hear don't hear from you - we will contact you and will continue to do so until we have a response.

This may include a home visit as part of our safeguarding and welfare procedures.

A reminder: Please ensure you are signed up for Studybugs to inform the school of any a

## Attendance This week

EYFS = 95.9%

Year 1 = 97.6%

Year 2 = 94.6%

Year 3 = 95.1%

Year 4 = 93.1%

Year 5 = 90.9%

Year 6 = 95.4%

## Attendance Groups

Green 97-100%

Best chance of academic success

Yellow - 96-96.9%

Risk of underachievement

Amber - 94-95.9%

Serious risk of underachievement

Pink - 90-93.9%

Severe risk of underachievement

Red - 0-89.9%

Extreme risk - persistent absentee

## Summer Term 1 - Attendance Data

Wk Beg 13th April - 93.7%

Wk Beg 20<sup>th</sup> April - 94.8%

Our attendance for  
this week is :

94.8%

Our attendance for  
the year to date is:

93.7%

# Awards this Week

In today's assembly, we celebrated...

## Class Superstars

**Peacocks:** Victoria H  
**Puffins:** Luna T-O'K  
**Mallards:** Teddy S  
**Moorhens:** Reggie B  
**Wrens:** Emmy N  
**Woodpeckers:** Elsie W  
**Hawks:** Emily F  
**Hérons:** Connie O'S  
**Swifts:** Hallie D-M  
**Starlings:** Poppy B  
**Kites:** Gracie H  
**Kingfishers :** Madison T

## Values Superstars

**Peacocks:** Ayla D S  
**Puffins:** Olly W  
**Mallards:** Adaline N  
**Moorhens:** Isla W  
**Wrens:** Devlin P  
**Woodpeckers:** Parker W  
**Hawks:** Emily W  
**Hérons:** Charlie W  
**Swifts:** Nancy B  
**Starlings:** Theo L-H  
**Kites:** Jenson G  
**Kingfishers :** Elie E

## Numbots Star Of The Week

**Puffins:** Isla R  
**Peacocks:** Arthur W  
**Mallards:** Travis B-G  
**Moorhens:** Ralph J

## Times Tables Rockstars Star Of The Week

**Wrens:** Theo G  
**Woodpeckers:** Hayley O'L  
**Hawks:** Fernando G  
**Hérons:** Khush B  
**Swifts:** Eden-Rose W  
**Starlings:** Isla S  
**Kites:** Frazier S  
**Kingfishers:** Darcey A

## Housepoints This Week

<b>Ash:</b> 144	<b>Birch:</b> 186	<b>Elm:</b> 189
<b>Oak:</b> 184	<b>Sycamore:</b> 219	<b>Willow:</b> 189

<b>Ash:</b>	<b>Birch:</b> 1	<b>Elm:</b>
<b>Oak:</b>	<b>Sycamore:</b> 1	<b>Willow:</b>

House Cup Winners This Week are.....



**Sycamore**



# Safeguarding Information

## What should you do if you have a concern?

If you have a worry or concern about the welfare or safety of a child in our school what should you do?

Please contact our safeguarding team via [safeguarding@pottonprimary.co.uk](mailto:safeguarding@pottonprimary.co.uk)

## Our Safeguarding Team



Miss Jordana Watts  
Designated Safeguarding Lead



Mr Stephen Boyd  
Deputy Head &  
Deputy Designated Safeguarding Lead



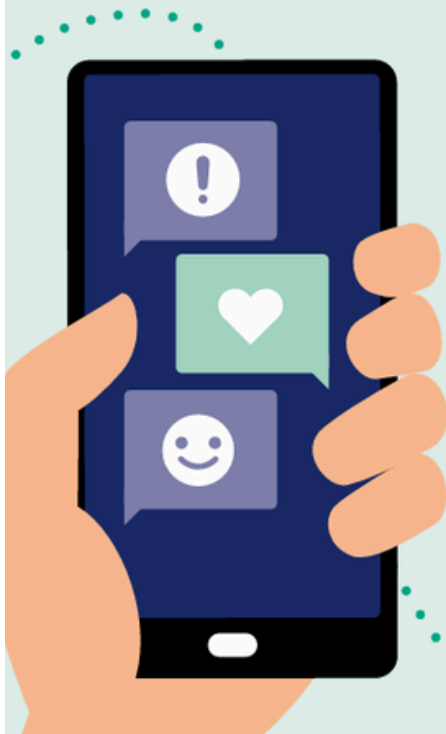
Mrs Hazel Desborough  
Family Support Worker &  
Deputy Designated Safeguarding Lead



Mrs Christine Ives  
SendCo & Safeguarding Office

Mrs S Gurney - Designated Safeguarding Governor

**Why talking about digital life is hard for kids ...**  
... and how to make it easier



### Parents and carers don't know enough

- 1 Talk about both the good and the bad of life online**  
Young people say parents don't always understand the platforms they use or the online trends they enjoy. They also feel that adults focus mostly on what can go wrong, and rarely acknowledge the parts of being online that matter to them.
- 2 Be involved early and collaborate on key decisions**  
Young people say that when parents take an active interest from the start, they're better placed to help if something goes wrong. They also want to be consulted about decisions around their digital use, so they can understand the reasoning and feel the rules are fair.
- 3 When in doubt, ask your child**  
They know their online world best — and you're the person best placed to help them navigate it.
- 4 If you're still unsure, speak to a teacher or trusted professional**  
They can guide you towards the right advice and further support.



POTTON PRIMARY PTFA

# VOLUNTEERS NEEDED!

BE PART OF SOMETHING AMAZING!



**SATURDAY**  
**11<sup>TH</sup> JULY**



**12:00 –**  
**4:00 PM**



RUN A STALL

We need your help to make our  
Summer Fayre a huge success!



HELP SET UP



PACK AWAY



SERVE &  
REFRESH



AND MORE!



## CAN YOU HELP?

Whether you can help on the day or with  
setting up, packing down or running a stall –

**WE'D LOVE YOUR SUPPORT!**



GET IN TOUCH  
[ptfa@pottonprimary.co.uk](mailto:ptfa@pottonprimary.co.uk)



EVERY LITTLE BIT  
MAKES A BIG DIFFERENCE!

THANK YOU FOR SUPPORTING OUR SCHOOL COMMUNITY!

# Other Information

Join our after-school music sessions.

If you're looking for a fun way for your child to unwind after school, join our music groups.

Open to beginners and young people who already play an instrument. There's a group to suit every level, including keyboards, strings, brass, singing, string bands, junior saxophone, folk groups and more.

They are fun, friendly and great value for money. Led by experienced tutors, the small groups are also a great way to meet people, make new friends and learn a new skill.

Visit: <https://ukinspiring.speedadmin.dk/registration#/>

## New music groups!

# After school music sessions

Come along to our fun and friendly music groups in Biggleswade and Leighton Linlade. Beginners and experienced musicians welcome.

What's on offer:

- keyboard
- strings
- brass
- singing
- wind bands
- folk
- junior saxophone and more



# Other Information



## May 2026 Timetable

All regular sessions delivered live online via zoom. 90 minutes long


**£24 each or FREE with School Membership**

Book online at [facefamilyadvice.co.uk](http://facefamilyadvice.co.uk)

Recordings available for 48 hours

School Anxiety	4 May 10am
Understanding Anger	4 May 7pm
Facing Defiance	5 May 10am
Supporting Healthy Screen Use	5 May 7pm
Cannabis and Ketamine Awareness	11 May 10am
Anxiety Explained	11 May 7pm
Introduction to OCD	12 May 10am
What is ACT?	12 May 7pm
Decreasing Depression	18 May 10am
Raising Self-Esteem	18 May 7pm
Supporting Healthy Sleep	19 May 10am
Understanding the Teenage Brain	19 May 7pm
Autism: Improving Communication	25 May 10am
Improving Family Communication	25 May 7pm
Supporting a Child with ADHD	26 May 10am
Understanding Addictive Behaviour	26 May 7pm
<b>FREE Getting a Good Nights Sleep</b>	<b>28 May 7-8pm</b>

# School Uniform Supplier

mapac  Your Official School Uniform Supplier

## WELCOME TO MAPAC

We are delighted to be working with your school who have entrusted us with providing your children's school uniform.

### 1. HOW TO REGISTER & ORDER

- CLICK THE UNIFORM LINK FROM YOUR SCHOOLS WEBSITE...or...
- Visit [www.mapac.com/education/parents](http://www.mapac.com/education/parents) or search online for 'Mapac find your school'.
- Use the 'LOGIN/REGISTER' tab at the top of the page and fill in your details (even if you don't need to order straight away, it means you'll start receiving Mapac updates and offers!)
- Once on your dedicated school page, simply add everything you need to your basket, register (if you haven't already) and then check out.

### 2. ORDERING GUIDE

Under normal circumstances we aim for all orders to be sent out within 10-15 working days. During our busier periods (especially over the summer) or if anything unexpected occurs, it can take longer, so please allow us some extra time to get your order to you.

**Delivery to your home / work all year round!**

or

**FREE delivery to your school**

(This service will not operate during any school holiday this includes the 6 week summer holiday – order cut off date is 26th June for last delivery in to school before the end of term. Our aim will be to resume in September, you will be informed when this happens.)

## IMPORTANT SUMMER ORDERING INFORMATION

**To receive your order before the start of term please order by 31st July.**

We do everything we can to send out all items as soon as possible but a high volume of orders or unforeseen circumstances may occasionally lead to delays.

If you have any queries, please do not hesitate to call or email us. We are happy to help!

**T:** 01923 255525 | **E:** [parentcustomerservices@mapac.net](mailto:parentcustomerservices@mapac.net)

# Other Information

## 🌸 PLANT SALE 🌸

Brought to you by The Potton Show

📍 Potton Market Square, SG19 2NP

📅 Saturday 9th May

🕒 8.30am – 1.00pm

Come and stock up on your favourite plants! 🌻 🌿

Children - 🌱 Come and build a Lego plant or flower to be photographed and entered into the Potton Show 🏆 50p entry



# Other Information



**Football Development Centre**  
**Sandy Sports Centre – SG19 1BL**  
by 4 Corner Coaching



**Individual skills**



**UEFA coaches**



**Team play**

**High Quality Football Coaching by very experienced coaches.**

Developing - **Technical skills** – **Physical skills** – **Psychological skills** – **Social skills**

**Start Back Date - Friday 24<sup>th</sup> April 2026**

**£4.50 per session – 12 week block of Development**

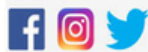


**Times/ages: 5-6pm = ages 5 - 9 & 6-7pm = ages 10 - 16 & Girls Only = ages 9-15**

**UEFA B coaches – Youth Award Level 3 - Enhanced DBS - Safeguarding  
BFAS (Basic First Aid for Sport)**

**Contact: Natasha – 07957980492 – natasha@4cornercoaching.co.uk**

**www.4cornercoaching.co.uk**



# Other Information



- ✓ Independent theatre school with professional staff with industry credits.
- ✓ Lots of performing opportunities, including full-scale musicals and performances on West End stages.

## WHAT PEOPLE SAY!

"The confidence she has gained is incredible." - *Parent*

"Everyone is really friendly and always helps each other." - *Student*

"Vision kickstarted my love for musical theatre and has led to my great achievements." - *Student*

SINGING | DANCE | ACTING | MUSICAL THEATRE  
ON EVERY FRIDAY



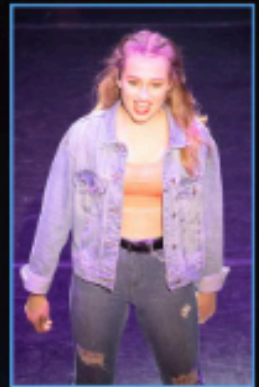
**JUNIORS**

🕒 16:00 - 17:00



**VISION**

🕒 16:30 - 19:30



**SENIORS**

🕒 17:00 - 20:00

ALL LESSONS ARE AT  
**IGNITE** STUDIOS

TO BOOK A FREE TRIAL  
AND FOR MORE INFORMATION

## CONTACT US

✉ [visiontheatrearts@hotmail.com](mailto:visiontheatrearts@hotmail.com)

📘 @Visiontheatrearts

☎ 07814571460



# Other Information

**THEATRE** DANCE  
**TRAIN** ACT  
SING

## OUTSTANDING PERFORMING ARTS CLASSES FOR 4 - 18 YEAR OLDS

Find us at Biggleswade Academy, Mead End,  
Biggleswade, Bedfordshire, SG18 8JU

Classes run on **Thursdays**

Junior Company: 4.15 - 5.45pm

Main Company: 4.30 - 7pm

To register for a taster session or for further info  
please visit [www.theatretrein.co.uk/biggleswade](http://www.theatretrein.co.uk/biggleswade)

Contact us on 07757495906

or [biggleswade@theatretrein.co.uk](mailto:biggleswade@theatretrein.co.uk)

**BELIEVE** **ACHIEVE** **EXCEED**  
in yourself your dreams expectations

